



a brand of The Colour Red Limited
bootcover
station



introducing

YULEYS[®]
Clean Step System by HexArmor[®]

Give your disposable overshoes **the boot.**

Say goodbye to dirt and grime and say hello to YULEYS® from HexArmor®, the remarkable, reusable slip-on sole that's helping even the dirtiest jobs clean up their act. The typical disposable overshoes are slippery, expensive, and after one use they spend a lifetime in a landfill. YULEYS reusable work boot and shoe covers can be easily slipped into and used thousands of times, while providing greater traction and protecting floors and walls. With solid rubber construction, YULEYS are easy to clean and dry quickly, which makes them an easy call on every job site.

FAST. COST EFFECTIVE. CLEAN.



1 Hands-free on-and-off

2 Heel-lock system

3 Flexible design





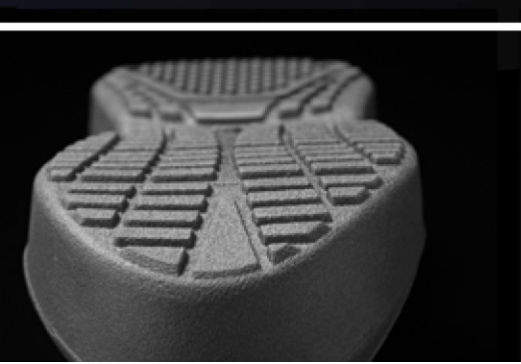
The YULEYS® Solution

These industrial-grade work boot covers are designed to help you get your work done quickly and efficiently, without making a mess. Available in blue, gray, and red.

4 Slip-reducing tread

5 Specifically designed for steel-toed boots

6 Reduces effects on landfill



Make the **Hands-Free** Call

If you've ever fumbled around with disposable overshoes while your hands are full, you'll appreciate YULEYS® hands-free design, which allows you to easily slip them on and off without bending over or using your hands. Once on, the patent-pending design includes a heel-lock system that keeps them firmly on your feet, and the slip-reducing tread keeps your feet firmly underneath you for a more confident step on wood, tile, linoleum and other surfaces.

Why **YULE** love them

Satisfied customers: You can do the best possible job outside, but a customer will remember muddy footprints left inside. YULEYS will keep debris, dirt, and contaminants where they belong, and keep your customers happy.



Better than overshoes:

If you've ever worn disposable overshoes, you know that they easily saturate, rip and leak, allowing water, mud and more to contaminate clean areas. With YULEYS, you get a durable, rubber sole that won't tear or leave soaked through dirty footprints behind.

Safer, healthier, and more productive employees:

Bending down to put on disposable overshoes can cause back strain and takes time. Increase worker safety and productivity with YULEYS. The hands-free, slip-reducing design makes for a safer, more efficient worker.



YULEYS® SAVE TIME ⌚ AND MONEY 💰



On average  disposable overshoes cost

8p per pair

1 worker uses about

7 pair per day



7 pairs a day

5 days a week

48 working weeks a year



A landfill full of overshoes VS.

one pair of YULEYS®



=£134/year

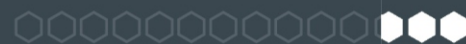
per worker in disposable overshoes

saves over £104.00
a year per worker

save ⌚ **28 hours**
a year



per worker





"I like the fact that our staff can wear protective footwear when in a home and not dirty people's property. Worker safety and damage liability are both looked after with one product."

Barry Buhler,
Buhler Mechanical Service



"For my peace of mind as an owner, my service people wear YULEYS to protect our client's homes. We always get great feedback from customers about our footwear. YULEYS also help us stay OH&S compliant as we can still wear steel toes in the house without worry of scratching the flooring."

George Pinel ,
Owner, Instant Plumbing Ltd.



"Damaged flooring costs us over \$250,000 per quarter, so we were in need of a robust solution. YULEYS not only protect our customers flooring, but are a safer and more durable option than disposable overshoes."

Consumers Energy



Industrial-strength footwear for any industry.

Industrial Safety and Hygiene: Wear YULEYS® when entering sanitary work areas such as cafeterias, clean rooms, offices or boardrooms, and protect those environments from your wet, dirty or contaminated work boots.

Service Contractors: Entering people's homes is an essential and everyday part of a service contractor's job, and YULEYS minimize the dirt and debris tracked into homes, which maximizes customer satisfaction.

Food Processing/Agriculture: Maintaining a clean environment is crucial in food manufacturing and processing plants. YULEYS not only keep dirt and contaminants off the floor, but the industrial grade rubber inhibits bacterial growth, is odor resistant and disinfects easily.

Pharmaceutical/Electronics

Clean Room Environments: In precision manufacturing areas, keeping the mud off the floor simply isn't enough. Contaminants must be kept out of clean rooms, without exception. With approvals pending for anti-static, conductivity environments as well as sterilization requirements (e.g., autoclaving), there will soon be no reason to ever have to rely on disposables.

YULEYS® are offered in both TPR and SEBS Industrial-Grade Rubber.

Both Provide:

- Hands-free on-and-off usage
- Slip-reducing tread design
- Heel-lock system
- Reduces effects on landfills
- Easy to clean

SEBS Benefits Include:

- More durable / longer lasting
- Superior chemical and abrasion resistance
- Greater flexibility at extreme temperatures
- Autoclavable
- Silicone free



How to Use Your YULEYS®

YULEYS are easy to use and easy to remove.

1 PLACE: Place both YULEYS beside each other on the floor.

2 STEP IN: Step into them one at a time, toe first, pushing down on heel until firmly locked into place. Repeat for other foot. It's that easy!



3 STEP OUT: To remove YULEYS step on opposite heel tab and lift foot out. Repeat on other foot. Convenient hands-free removal.



Easy cleaning and care

YULEYS® are designed for today's busy companies and workers: simply rinse them off when you're done and let them air dry. YULEYS® are launderable and can be sterilized with bleach.

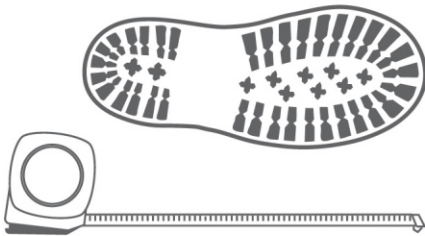
CE Certified

**simply
spray
and set
to dry**



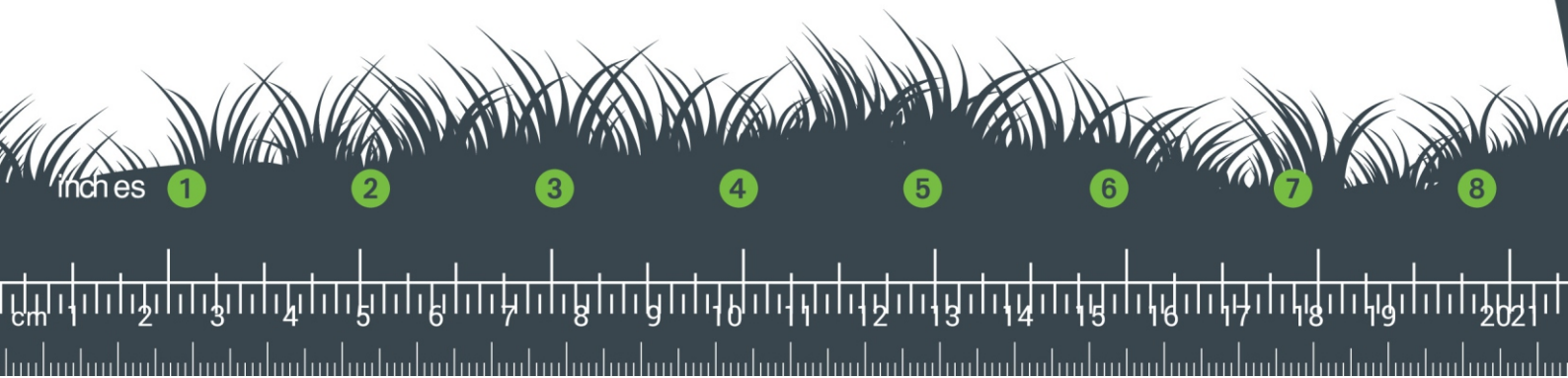
Just Your Size

Universal sizing guidelines make it easy to find the YULEYS® to fit your work boot or shoe. When trying to determine your YULEYS size, measure the sole of your footwear from heel to toe. When measured correctly, your YULEYS will fit snug.



Work Boot/Shoe Sole Length	YULEYS® Sizes
10 in. (25.5 cm) - 10 1/2 in. (26.7 cm)	A
10 1/2 in. (26.7 cm) - 11 in. (27.9 cm)	B
11 in. (27.9 cm) - 11 3/4 in. (29.8 cm)	C
11 3/4 in. (29.8 cm) - 12 5/16 in. (31.3 cm)	D
12 5/16 in. (31.3 cm) - 12 5/8 in. (32.0 cm)	E
12 5/8 in. (32.0 cm) - 12 15/16 in. (32.9 cm)	F
12 15/16 in. (32.9 cm) - 13 5/16 in. (33.8 cm)	G
13 5/16 in. (33.8 cm) - 13 3/4 in. (34.9 cm)	H
13 3/4 in. (34.9 cm) - 14 3/16 in. (36.0 cm)	I

*If the length falls in a range between two YULEYS sizes, select the smaller size.



Leaner. Cleaner.

Greener.

How many tons of overshoes are getting kicked into landfills every year? Millions of pairs are disposed of every day, which really adds up fast. YULEYS® work as hard as the people who wear them, and they are built for heavy use. If they ever need to be replaced, they can be easily recycled and given another life. Which gives us yet another reason to feel good about wearing them.



9

10

11

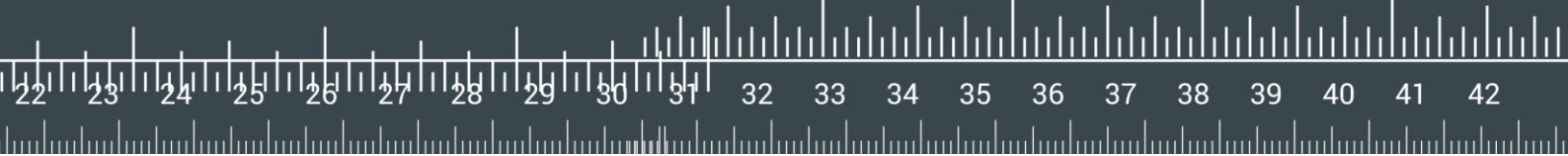
12

13

14

15

16





Preferred Distributor for Construction



3 Cwminkin
Llandyssil, Montgomery
Powys. SY15 6HH
Tel: 01686 668438

Email: enquiries@thecoloured.co.uk

Web: www.thecoloured.co.uk/products-shoe-covers

 **YULEYS**[®]
Clean Step System by HexArmor[®]

 **HexArmor**[®]